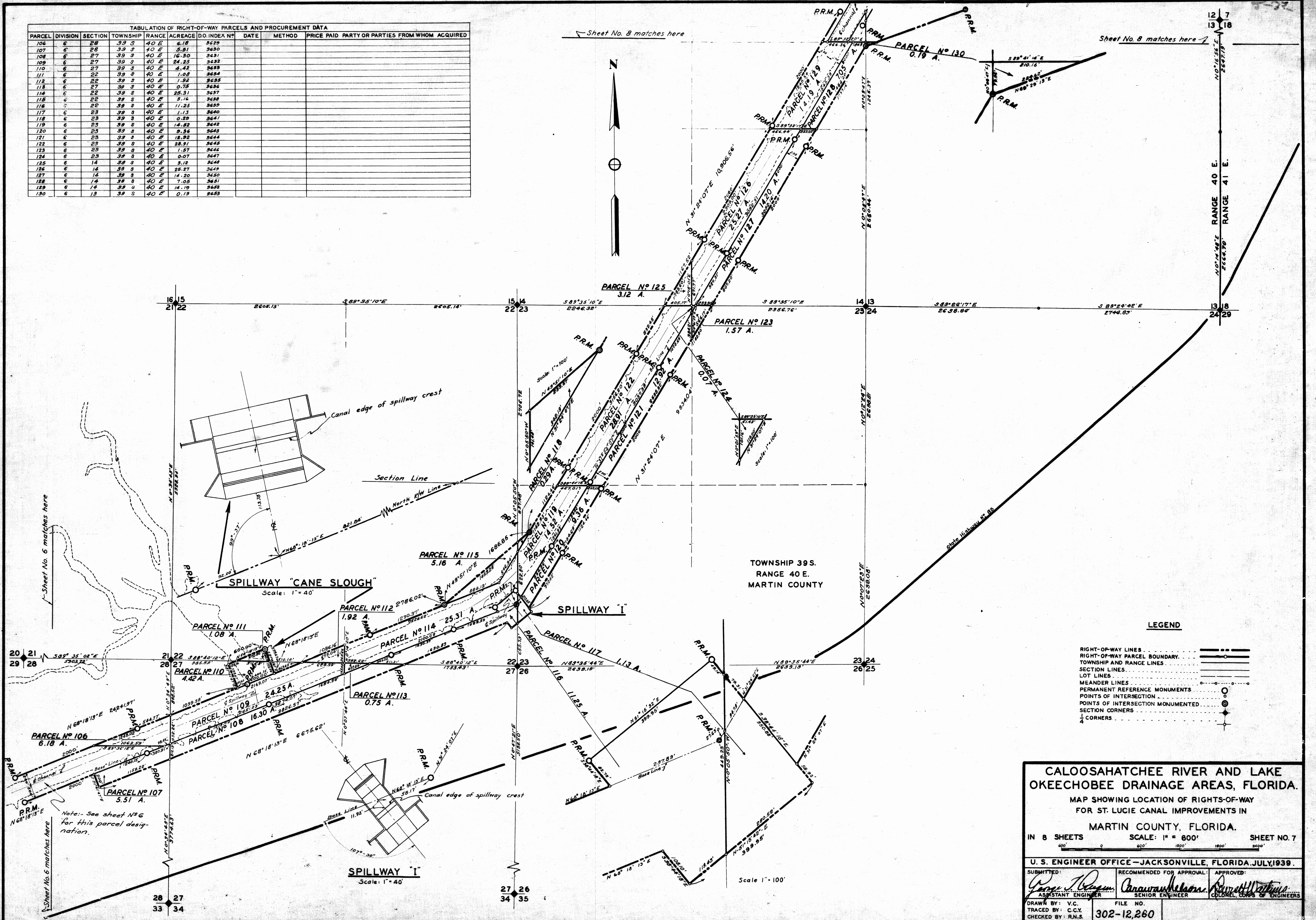


TABULATION OF RIGHT-OF-WAY PARCELS AND PROCUREMENT DATA										
PARCEL	DIVISION	SECTION	TOWNSHIP	RANGE	ACREAGE	D.O. INDEX NO.	DATE	METHOD	PRICE PAID	PARTY OR PARTIES FROM WHOM ACQUIRED
106	6	28	39 S	40 E	6.18	3629				
107	6	28	39 S	40 E	5.81	3630				
108	6	27	39 S	40 E	16.30	3631				
109	6	27	39 S	40 E	24.45	3632				
110	6	27	39 S	40 E	4.42	3633				
111	6	22	39 S	40 E	1.08	3634				
112	6	22	39 S	40 E	1.92	3635				
113	6	27	39 S	40 E	0.75	3636				
114	6	22	39 S	40 E	25.31	3637				
115	6	22	39 S	40 E	5.16	3638				
116	6	22	39 S	40 E	11.25	3639				
117	6	23	39 S	40 E	1.13	3640				
118	6	23	39 S	40 E	0.29	3641				
119	6	23	39 S	40 E	14.82	3642				
120	6	23	39 S	40 E	9.36	3643				
121	6	23	39 S	40 E	18.92	3644				
122	6	23	39 S	40 E	28.91	3645				
123	6	23	39 S	40 E	1.57	3646				
124	6	23	39 S	40 E	0.07	3647				
125	6	14	39 S	40 E	3.12	3648				
126	6	14	39 S	40 E	25.27	3649				
127	6	14	39 S	40 E	14.20	3650				
128	6	14	39 S	40 E	7.05	3651				
129	6	14	39 S	40 E	14.19	3652				
130	6	13	39 S	40 E	0.19	3653				



LEGEND

RIGHT-OF-WAY LINES	---
RIGHT-OF-WAY PARCEL BOUNDARY	---
TOWNSHIP AND RANGE LINES	---
SECTION LINES	---
LOT LINES	---
MEANDER LINES	---
PERMANENT REFERENCE MONUMENTS	○
POINTS OF INTERSECTION MONUMENTED	⊙
SECTION CORNERS	⊕
1/4 CORNERS	⊕

CALOOSAHATCHEE RIVER AND LAKE OKEECHOBEE DRAINAGE AREAS, FLORIDA.

MAP SHOWING LOCATION OF RIGHTS-OF-WAY FOR ST. LUCIE CANAL IMPROVEMENTS IN MARTIN COUNTY, FLORIDA.

IN 8 SHEETS SCALE: 1" = 600' SHEET NO. 7

U. S. ENGINEER OFFICE—JACKSONVILLE, FLORIDA. JULY, 1939.

SUBMITTED:	RECOMMENDED FOR APPROVAL:	APPROVED:
<i>George J. Brown</i> ASSISTANT ENGINEER	<i>Carroll H. Nelson</i> SENIOR ENGINEER	<i>Robert W. ...</i> COLONEL, CORPS OF ENGINEERS
DRAWN BY: V.C.	FILE NO.	
TRACED BY: C.C.Y.	302-12,260	
CHECKED BY: R.N.S.		